



PARENT MENTOR PROGRAM

The Parent Mentors are not employed by the State Support Team but do work collaboratively with the State Support Team, parents and school districts to improve the quality of education for children with disabilities. Paula Drummer and Kendis Bender are supported by grants from the Ohio Department of Education and employed by a school district or Educational Service Center.

The role of the Paula Drummer and Kendis Bender is to guide families through the special education process. This process includes clarifying parents' rights and responsibilities; to provide information and resources to families and school personnel on education laws, district programs and services, and community resources; to attend Individual Education Program meetings and other meetings, at the request of the parents and/or school staff; and to build collaborative partnerships between families, schools and community agencies for the purpose of benefiting students with disabilities.



Paula Drummer
(440) 324-5777 ext. 1166
drummer@esclc.org
Lorain County:
Elyria, Firelands, Keystone, Sheffield-
Sheffield Lake and Wellington
Erie, Huron and Sandusky Counties:
Bellevue, Norwalk and Monroeville



Kendis Bender
(440) 324-5777 ext. 1166
bender@esclc.org
Lorain County:
Amherst, Avon, Avon Lake,
Columbia, Lorain, Midview,
North Ridgeville, Oberlin

Newsletter Highlights

Preschool Zone

Elementary Corner

Transition (14+)/High School

Reading

Learners with Complex Needs

IEP Tip Corner

Local Resources/Events

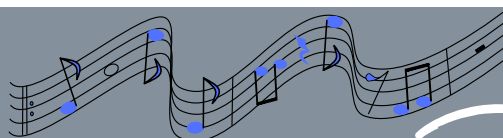
PRESCHOOL

Music Therapy in North Ridgeville

This program is designed for families and their children (ages 0-6 years) who are struggling in an area of development. Join us for a hands-on program designed to teach families how to use music to improve their child's academic, motor, communication and social skills as well as behavior. This program is led by a Board-Certified Music Therapist.

For information on social distancing and masking policies, please refer to our **Health & Safety page**. Siblings ages 0-6 years may also attend but must be registered separately. Families may only attend one session per month.

[REGISTER HERE!](#)



Thursday, Sept. 29
6:30 p.m. - 7 p.m.
IN-PERSON



ELEMENTARY

How to improve social skills in students with ADHD ... click [HERE!](#)

CLICK ON THE LINKS!



HIGH SCHOOL

Transition (14+)

Adult clinics ... click [HERE!](#)



READING

Here are a few remarkable reading links:

Back to school ... click [HERE!](#)

Reading tips for parents of multiple languages ... click [HERE!](#)



IEP TIP CORNER

Organizing your child's school binder!
Tips and tricks ... click [HERE!](#)



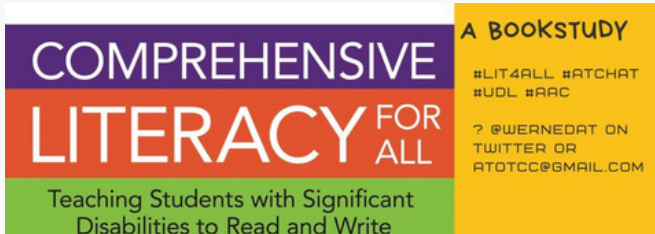
Dolly Parton's Imagination Library

Enroll today ... click [HERE!](#)

LEARNERS WITH COMPLEX NEEDS

Complex Literacy for All Book Study
Begins Monday, Aug. 29 via Facebook.

This a FB group committed to sharing the strategies outlined in the book "Comprehensive Literacy For All: Teaching Students with Significant Disabilities to Read and Write."



Organizing Your Child's Binder



LOCAL RESOURCES/EVENTS

Yoga Classes

Adapted Fitness and Yoga Plus LLC offers adapted aerobics, yoga, and more for individuals with disabilities and their families. Our classes benefit anyone that is in need of an adapted, low impact exercise program offering multiple options. You can attend our classes at locations throughout the Westlake City Schools, but all of our instructors can travel anywhere to teach our successful fitness and wellness programs.

Please contact Angela directly if you are interested in attending a class or starting any of our programs in your city, your city's schools or adult day programs. Adapted FYP also offers a movement and wellness camp during the summer.
<https://www.adaptedfyp.com/>

YOGA

CFK sponsored Parent Match Connect

Would you like to meet other parents who have similar experiences to your own but are further along on the path? Would it be nice to have someone to share your joys and frustrations? If so, plan to attend Parent Match Connect on Tuesday, Sept. 27 where you'll meet our Parent Match Volunteers who will introduce themselves and their stories. This is a psychoeducational peer support group. This program is for adults only and will not be recorded. Presented in partnership with Westlake Porter Public Library and the Rotary Club of Westlake-Bay Village. Childcare is available for this event, but registration is required. Click [here](#) to register for childcare.